

2025本山デリー4・7月46 f



Oil Pattern Distance:	46 Feet	Reverse Brush Drop:	46 Feet	Oil Per Board:	50 uL
Forward Oil Total:	15.25 mL	Reverse Oil Total:	8.1 mL	Volume Oil Total:	23.35 mL
Forward Boards Crossed:	305 Boards	Reverse Boards Crossed:	162 Boards	Total Boards Crossed:	467 Boards

	Start	Stop	Loads	Speed	Crossed	Start	End	Feet	T.Oil
1	3L	3R	2	14	70	0.0	1.9	1.9	3500
2	5L	5R	1	14	31	1.9	3.8	1.9	1550
3	7L	7R	1	18	27	3.8	6.3	2.5	1350
4	10L	10R	1	18	21	6.3	8.8	2.5	1050
5	11L	11R	2	18	38	8.8	13.9	5.1	1900
6	12L	12R	2	22	34	13.9	20.1	6.2	1700
7	13L	13R	3	22	45	20.1	29.4	9.3	2250
8	14L	14R	3	22	39	29.4	38.7	9.3	1950
9	2L	2R	0	26	0	38.7	46.0	7.3	0

Forward Reverse More

	Start	Stop	Loads	Speed	Crossed	Start	End	Feet	T.Oil
1	2L	2R	0	30	0	46.0	29.0	-17.0	0
2	14L	14R	2	26	26	29.0	21.7	-7.3	1300
3	12L	12R	1	22	17	21.7	18.6	-3.1	850
4	11L	11R	1	18	19	18.6	16.1	-2.5	950
5	9L	9R	2	18	46	16.1	11.0	-5.1	2300
6	7L	7R	2	14	54	11.0	7.1	-3.9	2700
7	2L	2R	0	10	0	7.1	0.0	-7.1	0

Forward Reverse More

Conditioner:
Type In or Select
One

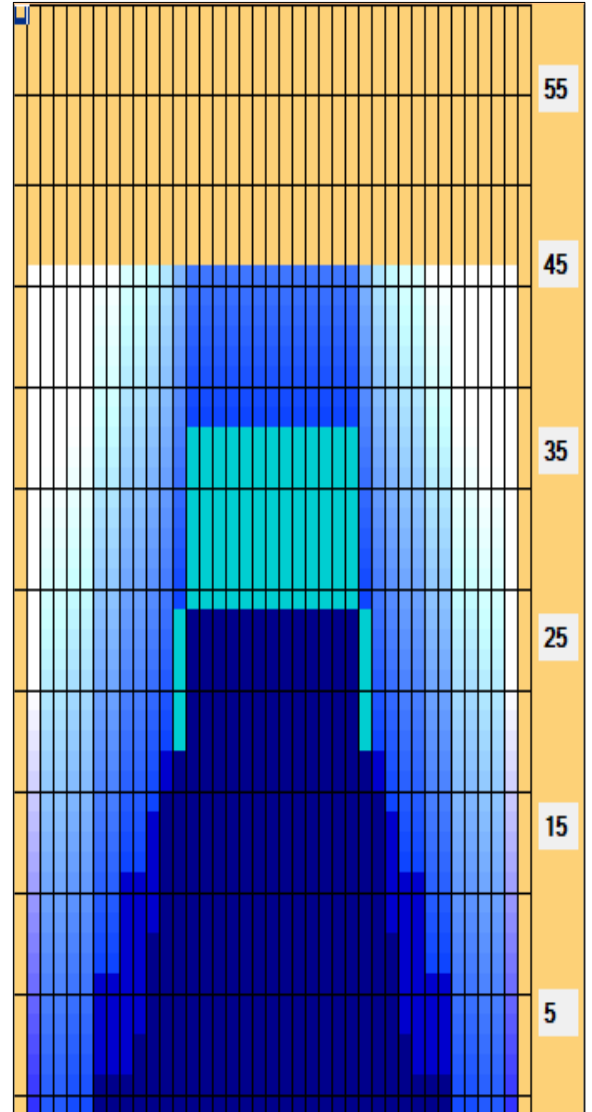
TransferType:
Type In or Select
One

Forward

Reverse

Combined

Buff



Item	3L-7L:18L-18R	8L-12L:18L-18R	13L-17L:18L-18R	18L-18R:17R-13R	18L-18R:12R-8R	18L-18R:7R-3R
Description	Outside Track:Middle	Middle Track:Middle	Inside Track:Middle	Middle: Inside Track	Middle:Middle Track	Middle:Outside Track
Track Zone Ratio	7.19	2.3	1.05	1.05	2.3	7.19

